



CYTE FOUNDATION
CHANGING YOUTH THROUGH EDUCATION

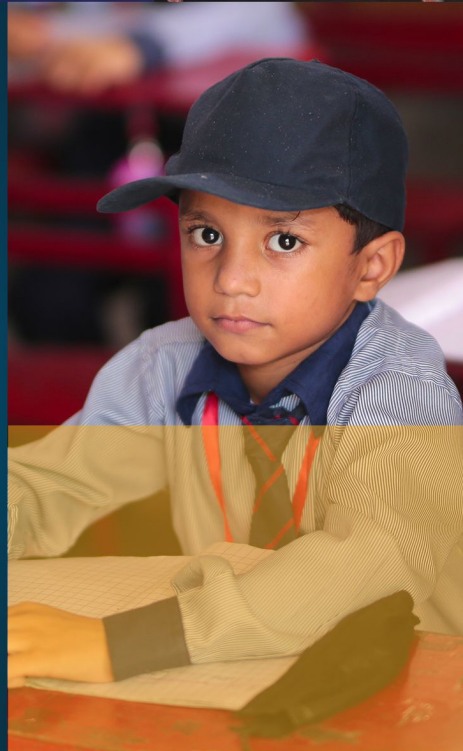


2021

ANNUAL REPORT



**BE
EDUCATED
AND
FEEL
EMPOWERED.**



CONTENTS

- 01 CHAIRMAN'S MESSAGE
- 02 DIRECTOR MESSAGE
- 03 COUNTER
- 04 INTRODUCTION
- 05 THE CONCEPT
- 06 VISION & MISSION
- 07 5C's
- 08 CYTE MODEL
- 09 HOW IT BENEFITS THE CHILDREN
- 10 CORE VALUES
- 13 WHERE WE WORK
- 14 WHAT CYTE DOES?
- 17 ORGANOGRAM
- 18 CYTE CHAPTERS
- 24 CYTE EDUCATION PROGRAMS
- 31 GOAT PROJECT
- 36 GIRLS' EDUCATION & EMPOWERMENT
- 46 PARTNERSHIP WITH CAREEM
- 49 1K1LIFE
- 55 WE LOVE OUR PARTNERS
- 56 FINANCIAL HIGHLIGHTS





CHAIRMAN'S MESSAGE

Community is at the heart of everything we do at the CYTE Foundation. It centers us as we live through the outbreak of the coronavirus, economic disruptions and political unrest as well as the uncertainty of what might come next.

Though we cannot be confident of what the future holds, we can be clear and resolved in our mission: to lead positive systemic change that strengthens Pakistan. By leveraging the talents and resources of all sectors public, private and philanthropic we did what none of us could achieve on our own. By uniting the passion and commitment of donors, advisors, community leaders and nonprofits, we are creating sustainable solutions that will continue to affect lives for years to come.

At CYTE we say, "Changing Youth Through Education," and what we mean is that healing, growth, transformation and activism start inside you and me and radiate out to make a difference in the world. When we are inspired, we inspire others!

Each day we open our doors and greet our youth, families, colleagues and community with love and respect. We recommit to open minded learning, constant improvement and intentional evolution as individuals and as an organization. And, whether in the classroom, the garden, the theater, the kitchen, the athletics field, or anywhere else on our campus, we live by a set of values that informs the way we walk in the world.

You have blessings to share and receive, and you are welcome to join us. Come take a tour, get involved! Bring your energy and resources and find out how you can change the world, starting at CYTE.

Sincerely

YASAR RASHID

Chairman and Founder
CYTE Foundation



DIRECTOR'S MESSAGE

It is during times like these that I am proud to be a part of CYTE Foundation, working to advance equity, reduce disparities, and support communities across Pakistan. For 9 years, we have collectively addressed the most pressing community issues and funded innovative solutions to drive transformational change.

We know that each day is bringing significant challenges and pressures on the operations of nonprofit organizations and on their leadership. We also know that nonprofit leaders rise to challenges every day with ingenuity, compassion, resilience, fortitude, and integrity. In times like these, nonprofit organizations in our communities stand shoulder-to-shoulder, and we encourage you to stand at their backs.

Driving Effectiveness & Impact

We are seeing radical shifts in how the social sector works including unprecedented cuts in government funding, disruptions from technology, the rise of impact investing, policy changes at the state and federal levels, and continuing increases in demand for vital safety net services. To ensure our partners can not only compete but can thrive in this new reality, we will be examining how to offer new and expanded services, strengthen our capacity building programs, create peer networks, and develop new funding partnerships.

Building Community & Collaboration

Breaking the cycle of poverty will require a committed effort that involves government, funders, the private sector, and nonprofit organizations themselves. Consequently, we want to build a space for collaborative efforts among all of our partners and stakeholders to address issues of equity, economic mobility, and ensuring access for all.

Adapting How We Work

We are also improving the way we work as an organization. We are refreshing and revitalizing our strategic plan and vision for how we deliver impact, exploring new systems and technology to better serve our partners, and improving our website to offer visitors an enhanced experience. We will also be moving our offices to a new and bigger space that will allow us to better meet the needs of a growing organization.

This is a going to be a team effort. And I am deeply grateful to the entire team here at CYTE and our board for their support and assistance in helping me transition into this position.

Thank you.

NASAR US SAMAD QURESHI

Director

CYTE Foundation



9 YEARS



SCHOOLS: 47



STUDENTS: 7000



INTRODUCTION



EVERY CHILD MATTERS!

CYTE Foundation is an educational NGO working in the education sector since 2013. With a belief that every child matters, we have taken it upon ourselves to educate every child. It is only through education that the children of today will become the guiding light for others. This is why we are helping local communities develop educationally.

THE CONCEPT

THE CORE PHILOSOPHY

If you struggle to do something for making education accessible to every child, then CYTE is your answer. Equip the deserving children with learning so that can become responsible citizens of Pakistan.

The concept is specially designed to make children learn life skills at an early age.

With a focus on holistic growth, we cover multiple areas that help children develop practical insights.



VISION



An Educated Pakistan

MISSION

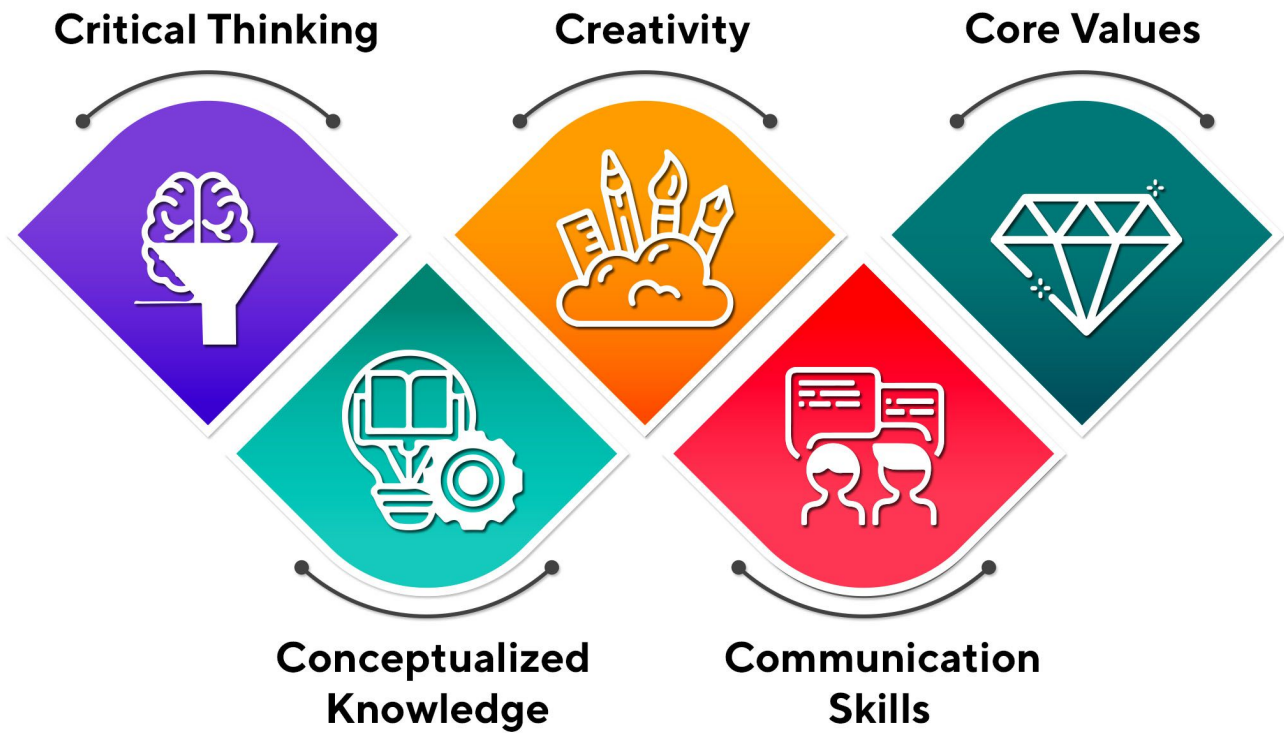


Make quality education accessible to under privileged families of Pakistan and help them create positive multiplier impact around their environment.



5C's

CYTE'S DEFINITION OF EDUCATION



At CYTE, we believe that quality education goes far beyond the traditional classroom and book learning. 21st century education is based on the 5C's of learning that students can not only use in through their school but throughout their life. That is why we have identified critical thinking, creativity, conceptualized knowledge, communication skills and core values as the essential educational elements of CYTE Foundation.



CYTE MODEL



Unique Partnership
With Schools



Catering To The
Most Deserving



Embedding Schools
In Remote And
Rural Areas



Purpose-Aimed
Education



Ensuring High
Quality Education



Training Programs
For Teachers
And Principals



Holistic Educational Approach

HOW IT BENEFITS THE CHILDREN?

- A complete set of age specific learning activities delivered
- A developmental focus on important areas that are essential for holistic nourishment and growth
- Covers multiple themes like life building skills, manual skills, financial literacy, and much more



CORE VALUES



CURRICULUM AIMED FOR SUCCESS

CYTE closely develops the curriculum for all of its schools. The curriculum is interactive, with the teaching approach centered on child learning.



TRAINING THE TEACHERS & PRINCIPALS

CYTE understands that training of the teachers and principals remain a prerequisite for delivering quality education in all of its schools. While teachers have direct interaction with students in the class, principals impact all the students in the school collectively. This is why our training team arranges an exclusive training program for the teachers and principals every year.

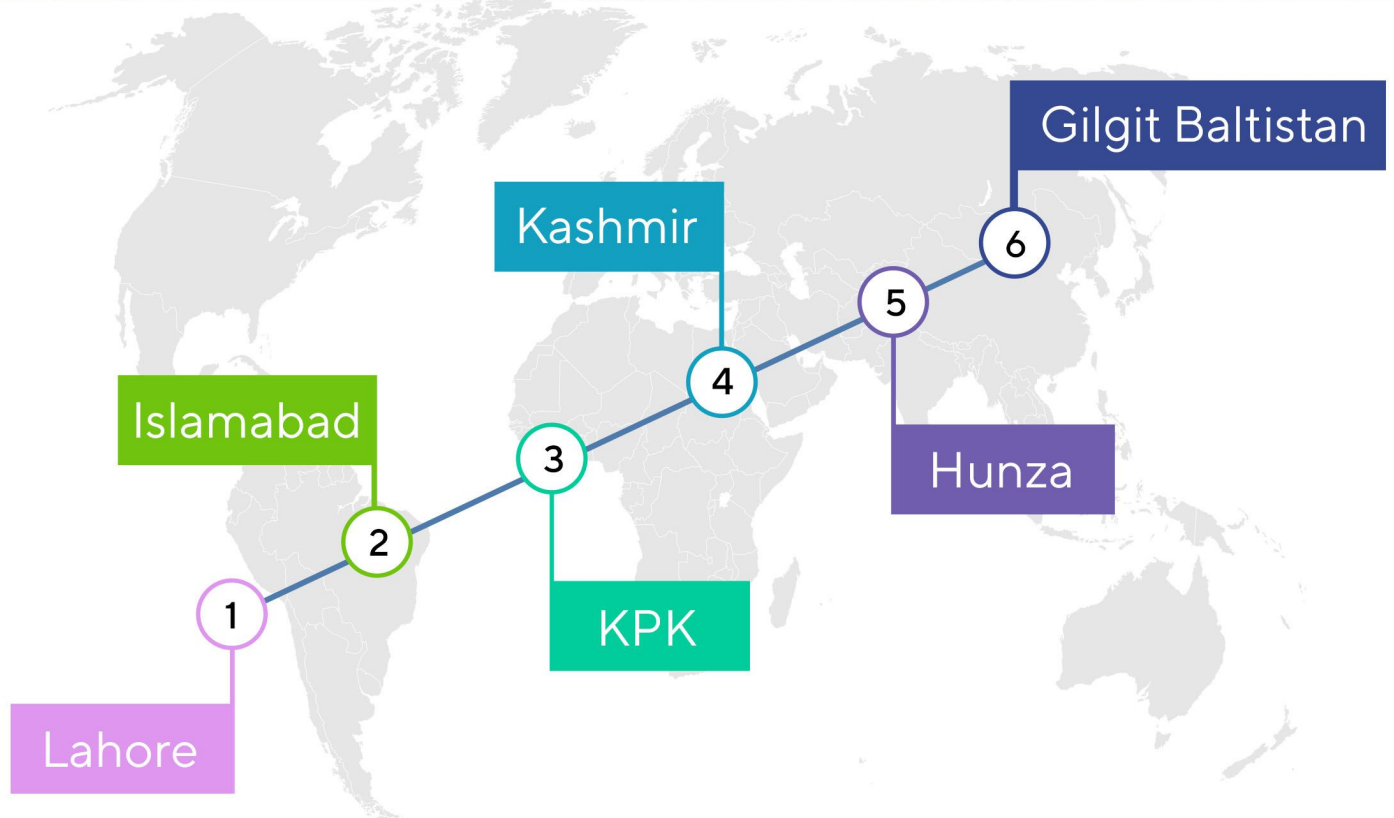
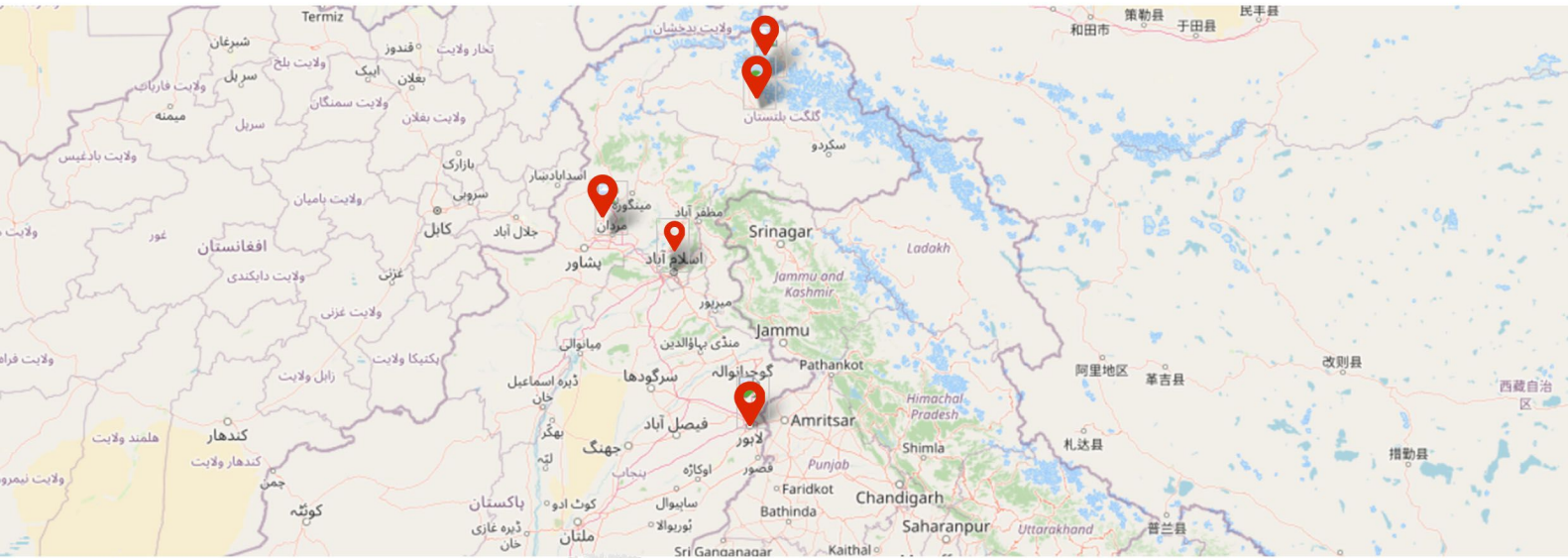
Teachers are trained for class management and enhanced learning practices for better education of the students. Principals are trained for effective leadership of the schools. Training includes problem solving, course planning, communication and interpersonal skills, conflict management, and developing cognitive thinking.



**HELP US
CHANGE A LIFE!**

**YOUR CONTRIBUTIONS MATTER.
CONTRIBUTE FOR AN EDUCATED SOCIETY.**

WHERE WE WORK?



COMMUNITY BASED REHABILITATION

CYTE Foundation’s actions are geared towards the betterment of the community. The areas we work in are remote and rural, which means that CYTE adopted schools generate economic activity in the region.

WHAT CYTE DOES?

The world in which we live is important to us. We consider it upon ourselves to make it better. CYTE is working towards its vision of An Educated Pakistan.

Making quality education accessible to the under privileged families of Pakistan, CYTE is working in close collaboration with the communities and relevant ministries to impart education.

- We advocate every child's right to quality education
- We partner with schools in remote areas to ensure no child remains uneducated
- We sponsor education of less-privileged children and bear all the educational expenses of the child including books, uniform and stationary
- We conduct family counselling. Involving the parents and communities, we make them understand the importance of education
- We develop school infrastructure
- We conduct trainings for teachers and principals
- We work with teachers, students and parents to ensure that no child remains uneducated



“

**AN EDUCATED FUTURE
FOR CHILDREN**

”

IMPORTANT FIGURES AT A GLANCE

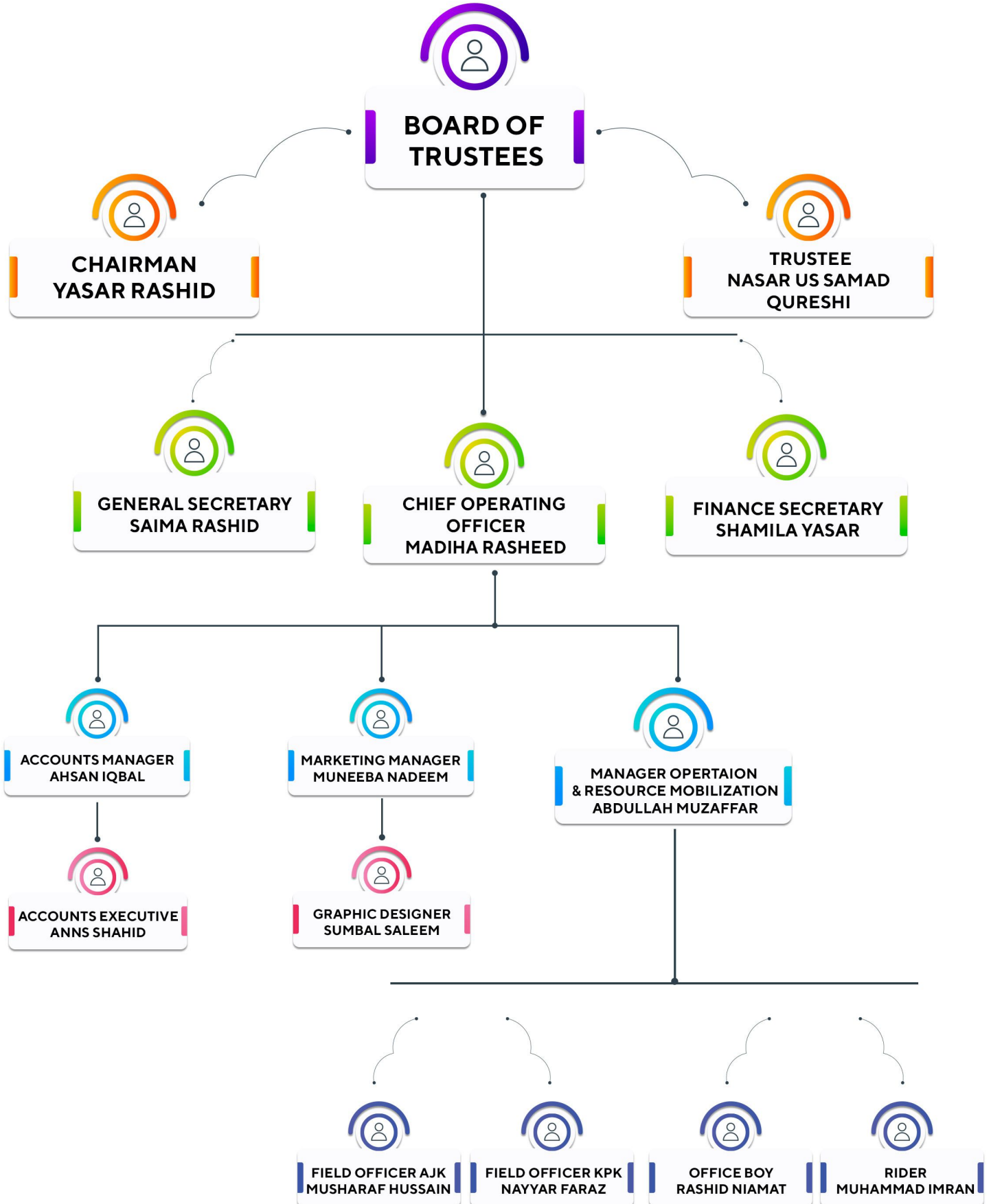
Sr#	Schools	No of Students
01	SAF Malikpur Lahore	400
02	The Smart School Lahore	800
03	Tahira Educational Grammer School Duban Pura Lahore	174
04	Fatima Grammar Public School Samamabad Lahore	50
05	Brightway Public School Changa Manga	110
06	Alfirdous Community School Islamabad	420
07	Sana Model Public School KPK	300
08	Al Suffa Model Public School KPK	300
09	Fatheen Learning Institute Mandoori KPK	195
10	Mustafai Model Public School Athmuqam AJK	330
11	Al Noor Model Science College Ashkot AJK	400
12	Noman Public School Kharigam AJK	230
13	Rising Star Public School AJK	160
14	Rising Public School Mirpura AJK	169
15	Mohai Ud Din Model Public School Hallamt AJK	150
16	Iqra Community Model School Ashkot AJK	215
17	AIMS School and College AJK	350

TOTAL NUMBER OF STUDENTS: 4753



**ENGAGING THE CULTURE
CHANGING THE WORLD**

ORGANOGRAM





CYTE CHAPTERS

LAHORE CHAPTER

CYTE Foundation initiated its journey from Lahore in 2013 from where it has grown massively. CYTE Foundation has successfully established its mark through a team of competitive trainers. We are committed to upscale the educational paradigm of the country.



KASHMIR CHAPTER

CYTE Foundation is spreading the light of education in Neelum Valley, AJK. The schools are progressively moving forward. There is a very positive response from the society and parents are now willing to send their children to school despite the problematic conditions of the country.



KPK CHAPTER

CYTE Foundation established its KPK Chapter just a year ago. Since then, it is spreading the light of education in KPK quite rapidly. We have already registered hundreds of out of school children in our partnered schools. CYTE KPK Team is led by dynamic and hardworking KPK Chapter's President, Mr. Muhammad Shahab Khattak, who is working voluntarily and tirelessly for the cause. Mr. Khattak is an ex banker and has worked over 30+ years in various countries at top positions. Soon CYTE will be reaching every district of KPK and ensure quality education to less privileged kids in our Partnered Schools.



GILGIT BALTISTAN CHAPTER

CYTE laid the foundation of the first school in a village in Ghizer. With the mission to educate every child of Pakistan, we are staying true to our cause. The work started on constructing a school for Nomads community living in Ishkoman, Ghizer, Gilgit-Baltistan.

The whole community doesn't have any school in the area and donated their land for the school project. It is the first school in their area ever.



SCHOOL IMPROVEMENT



CYTE partners with existing private schools to bring improvement.

PHYSICAL INFRASTRUCTURE IMPROVEMENT

- Classroom improvement
- School infrastructure improvement
- Clean water system
- Science and computer labs
- Sports facilities

PROCESSES

- Curriculum development
- Lesson planning
- Teacher training

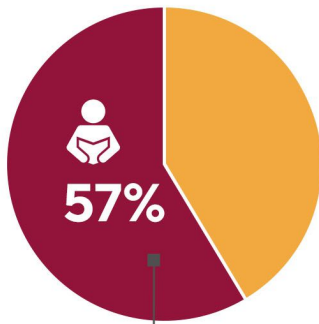
PARENT COUNSELLING

- Parents need to be counselled to eliminate dropouts.

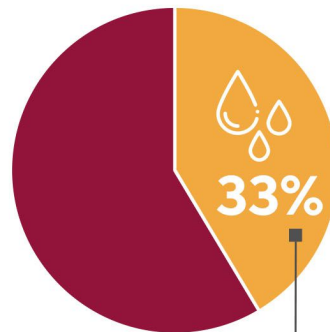
FINANCIAL VIABILITY

- In the rural and remote areas, private schools are running on commercial basis, where affordability is an issue. CYTE partners with them to sponsor a set number of children which enhances their financial viability and helps them sustain through their expenses.

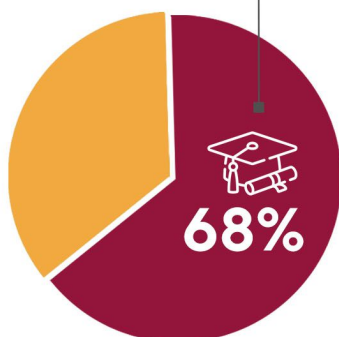
WHY EDUCATION?



The literacy rate of Pakistan



33% of Government Primary Schools did not have drinking water facility



Only 68% of Pakistani children finish primary school education

- There are 22.8 million boys and girls out of school
- Government spending on educational sector is 2.97% of its GDP

Features

CYTE Foundation has the following prominent features:

- Unique model of provision of education
- Single digit cost to donation ratio
- CYTE is managed by a team of volunteers, dedicated professional and qualified personnel keeping very low overhead costs
- Having TAX Exemption status for Donors under Section 2 [36] ITO-2001
- Transparent Child Adoption Program
- Donors can meet with their tagged family/student at any time

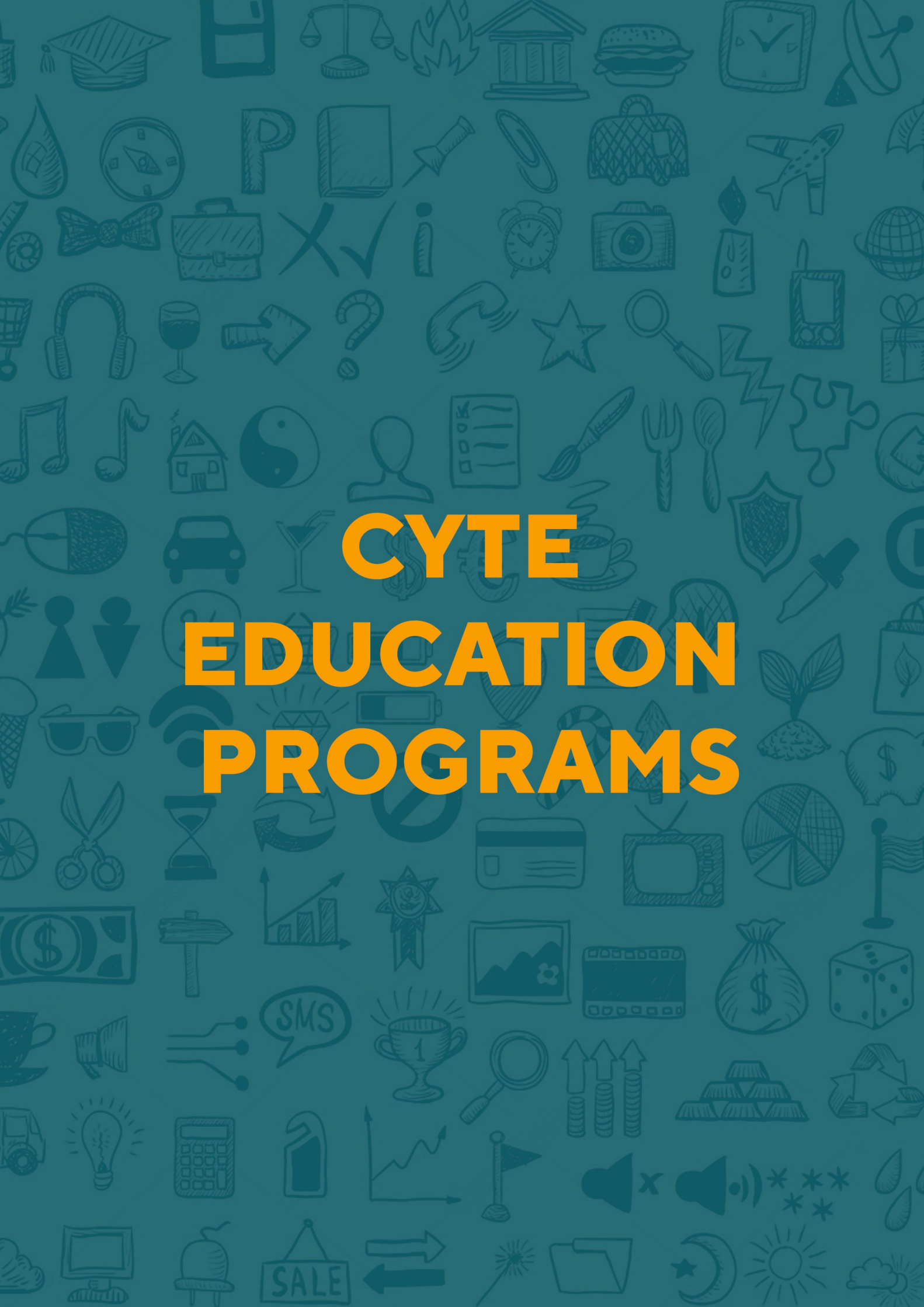
Compliance

Sharia compliant



Sharia compliant zakat mechanism certified by

“Centre for Advance Islamic Economics”



CYTE
EDUCATION
PROGRAMS

EDUCATION DEVELOPMENT CONSULTANT (EDC)



FIELD OFFICERS



CUSTOMIZED CURRICULUM



Sun Series & Iqbal Series (Textbooks / Readers / Worksheets)



IN-DEPTH TEACHER TRAINING





FAMILY COUNSELLING

School based family counselling is an integrative systems approach to helping children succeed academically and personally through mental health interventions that link family and school.

CYTE Foundation periodically conducts family counselling sessions for educating parents of the children in underprivileged areas regarding the importance of education.

The approach has the following benefits:

- School and family focus
- Systems orientation
- Educational focus
- Parent partnership
- Multicultural sensitivity
- Child advocacy
- Promotion of school transformation
- Interdisciplinary focus.



The background features a repeating pattern of light purple icons on a darker purple background. The icons include a teacher at a whiteboard, a person writing, a group of people, a document with a pencil, a bar chart, a person pointing, a person at a desk, a document with a pencil and checkmarks, a rolled-up diploma, a person at a computer, a person at a desk with a microphone, a person reading, a person at a whiteboard, a person at a desk with a laptop, a person at a desk with a laptop, and a person at a whiteboard.

TEACHERS' TRAINING

- Teachers were given training on child protection and conflict management, how children can be provided security in school and which activities can help in this regard.
- The teacher guides the students/pupils through planned activities so that they may acquire richest learning possible from their experiences.
- The teacher also interacts with the students under his/her responsibility in order to bring about the expected change in the student's behavior. In the school, the teacher has a pivotal role to play if effective teaching and learning must take place.
- Communication building was also emphasized as students need to communicate with teachers in case of a conflict.
- Teachers' Training was conducted in CYTE and SAF sponsored schools in Azad Kashmir
- Teachers were given training on child protection and conflict management, how children can be provided security in school and which activities can help in this regard.
- The participants were also guided regarding the initiatives of child protection which they should practice in the school.





GOAT PROJECT

THE MODEL

Female Goats are easiest and cheapest animal to maintain with good potential income. It produces many kids and have higher potential of income with time.

We have started donating Female Goats since 2020 to the family putting kids into schools. The goat will give free milk to the family. Family can also sell its milk, cheese, meat, fur, skin, etc. Children also love playing and fostering the goats.





GOATS TO PUT CHILDREN IN SCHOOL

IF WE PUT CHILDREN TO SCHOOLS, THEN HOW WILL THEY EARN?

We are hearing this from families since 2013, the day when CYTE Foundation started to put Out of School kids into schools. That is one of the major reason that Pakistan's 2.25 Crore Children are Out of School.



CYTE Foundation has finally come up with an Innovative Solution.

“ YOU PUT YOUR CHILD IN SCHOOL AND WE WILL DONATE YOU A FEMALE GOAT. ”

CONDITION FOR THE FAMILY



The family has to return one female Goat back to CYTE Foundation for onward donation to other families within two years.

The goat is purchased from local vendor in villages we are working in and is donated in front of community members and Mosque as guarantors. Whole community will ensure healthy goats are acquired from local vendor. The new recipient of goat to be returned by family is already identified in the area and is on waiting list and also serve as a check on the present recipient.

**WORKING TOGETHER TO BE
THE BEST WE CAN BE.**



CYTE FOUNDATION
CHANGING YOUTH THROUGH EDUCATION

AN EDUCATED PAKISTAN



GIRLS' EDUCATION

**GENDER EQUALITY IN EDUCATION
BENEFITS EVERY CHILD**



Investing in girls' education transforms communities, countries and the entire world. Girls who receive an education are less likely to marry young and more likely to lead healthy, productive lives. They earn higher incomes, participate in the decisions that most affect them, and build better futures for themselves and their families.

Girls education strengthens economies and reduces inequality. It contributes to more stable, resilient societies that give all individuals including boys and men the opportunity to fulfil their potential.

Education for girls is about more than access to school. It's also about girls feeling safe in classrooms and supported in the subjects and careers they choose to pursue including those in which they are often under represented.

WHY ARE GIRLS OUT OF SCHOOL?

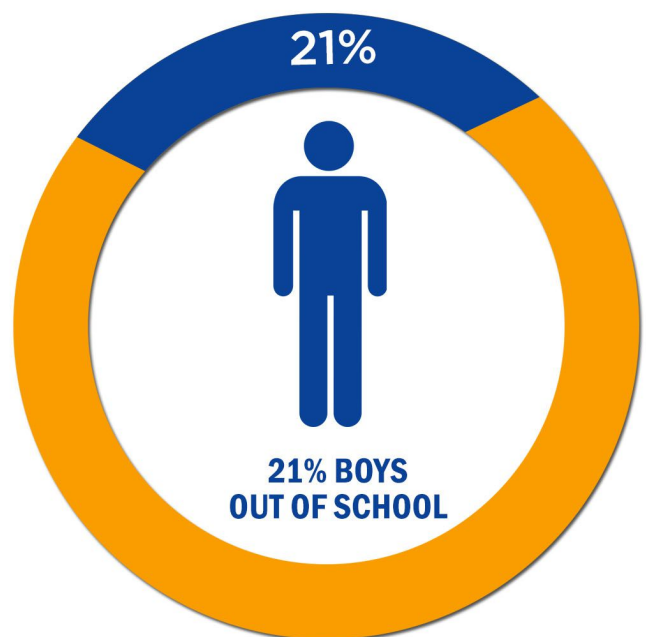
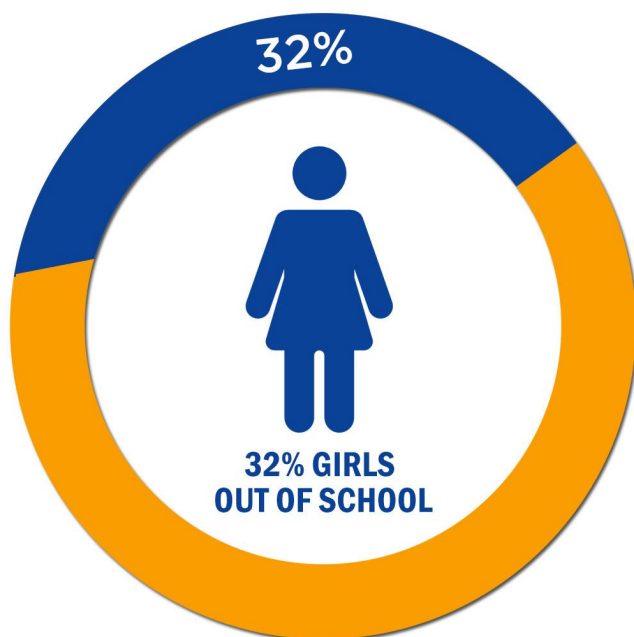
Despite evidence demonstrating how central girls education is to development, gender disparities in education persist.

In Pakistan, an estimated 22.5 million children are out of school, of which the majority are girls.

Thirty-two percent (32%) of primary school age girls are out of school, compared with 21% of boys. This gender gap differential persists into middle school, and by grade nine merely 13% of young women are still enrolled in school.

The insufficient supply of middle and high schools within accessible distance is a major barrier for girls in rural areas. Similarly, the lack of adequate sanitation facilities particularly impacts girls' retention rates in middle and high schools. Girls from poor communities living in remote, rural areas are especially vulnerable.

22.5 Million Children are Out of School



WHEN WE INVEST IN GIRLS' SECONDARY EDUCATION

- ♀ The lifetime earnings of girls dramatically increase
- ♀ National growth rates rise
- ♀ Child marriage rates decline
- ♀ Child mortality rates fall
- ♀ Maternal mortality rates fall
- ♀ Child stunting drops



GENDER EQUALITY IN EDUCATION

Gender equitable education systems empower girls & boys and promote the development of life skills like self management, communication, negotiation and critical thinking that young people need to succeed. They close skills gaps that perpetuate pay gaps, and build prosperity for entire countries.

Gender equitable education systems can contribute to reductions in school related gender based violence and harmful practices, including child marriage.



“

Gender equitable education systems help keep both girls and boys in school, building prosperity for the entire country.





CYTE'S WORK TO PROMOTE GIRLS' EDUCATION



CYTE works with communities, Governments and partners to remove barriers to girls' education and promote gender equality in education even in the most challenging settings.

Because investing in girls' secondary education is one of the most transformative development strategies, we prioritize efforts that enable all girls to complete secondary education and develop the knowledge and skills they need for life and work.

This will only be achieved when the most disadvantaged girls are supported to enter and complete pre-primary and primary education.

OUR WORK

- ♀ Tackles discriminatory gender norms and harmful practices that deny girls access to school and quality learning.
- ♀ Ensures that budgets are gender responsive and that national education plans and policies prioritize gender equality.
- ♀ Helps schools and governments use assessment data to eliminate gender gaps in learning.
- ♀ Promotes social protection measures, including cash transfers, to improve girls' transition to and retention in secondary school.
- ♀ Focuses teacher training and professional development on gender responsive pedagogies.
- ♀ Removes gender stereotypes from learning materials.
- ♀ Addresses other obstacles, like distance related barriers to education



WHAT CYTE IS DOING

CYTE Foundation is making a real difference, right now, in the lives of girls in Pakistan.

Our Tech Lab, in which girls learn invaluable communication skills, presentation strategies, and technological learnings that will lead to future jobs in this rapidly growing sector.

Our highly effective Tutoring Program, in which trained educational professionals work in small groups with at risk girls to ensure they finish 10th grade a crucial threshold to their academic success and eventual graduation.

Our Life Skills Program which emphasizes what we call our “4Cs” Confidence, Creativity, Communication and Critical thinking all essential skills to thrive in today’s workplace and life.

Our evergreen work to fund school fees, room and board, and even college expenses and mentorship programs for vulnerable girls who need us, so they can realize their worth and one day change the world.





**LOOKING TO THE
FUTURE WITH HOPE**

**PARTNERSHIP
WITH
careem**



CYTE Foundation and Careem join Hands to Ride Out of School Kids to School

- ▶ Careem will promote CYTE Foundation across all its platforms.
- ▶ Collect and donate funds to CYTE.
- ▶ Careem Executives & Employees will adopt Out of School kids with CYTE.
- ▶ Careem management will voluntarily help develop our schools.



We would like to extend our gratitude to Careem management for selecting CYTE Foundation after thorough due diligence.

Well done team CYTE. **Zeeshan Hasib Baig (GM - Country ahead Careem)**, **Nasar Qureshi (Vice Chairman- CYTE)** and **Yasar Rashid** attended the event.



CYTE Foundation has envisioned to educate all Out of School Children and developing schools infrastructure and process all across Pakistan.



1K 1LIFE

01**ADOPT A CHILD**

You can adopt a child in only PKR 1000 per month.

AIMS

Aims to enable less privileged students to acquire quality education in Pakistan.

02**03****WHAT DOES THE DONOR DO?**

The individual donor gives PKR 1000 per month for each child.

TAGGED WITH THE DONOR'S NAME

Each child is tagged to a particular donor paying the monthly fee.

04**05****REPROTING THROUGH THE APP**

We believe in transparency.

THE WORKING OF 1K1LIFE



INCREASE IN TRANSPARENCY

Meet the child/parents or school visits feature will increase transparency



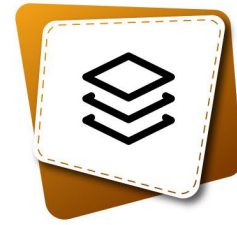
INFORMATIVE

Progress of the student in the form of panel data



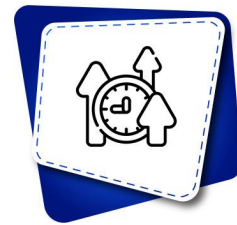
CHILD SUPPORT

Get to know the number of under privileged families/students who contacted CYTE Foundation for educational financial support



MORE ORGANIZED

Access student education related details directly



MORE EFFICIENCY

Use your login credential to view the students name, school name, attendance, grades and also communicate with the child or his/her family through that application



COMPLAINTS MONITORING

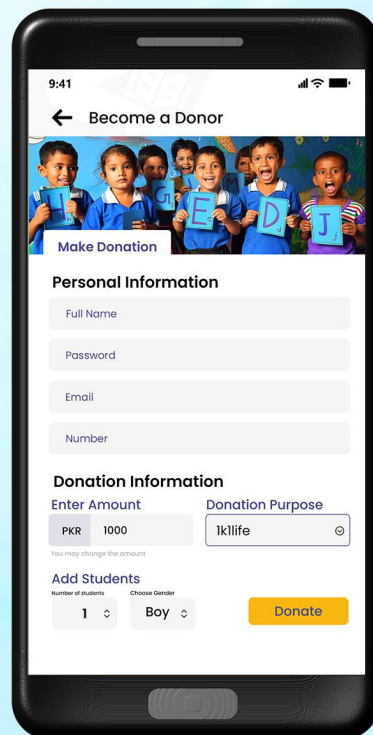
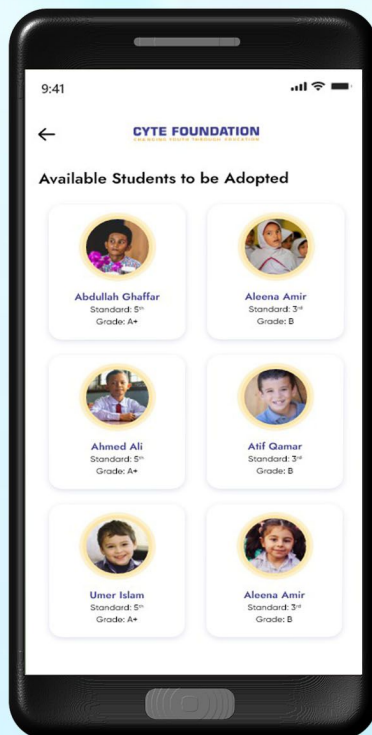
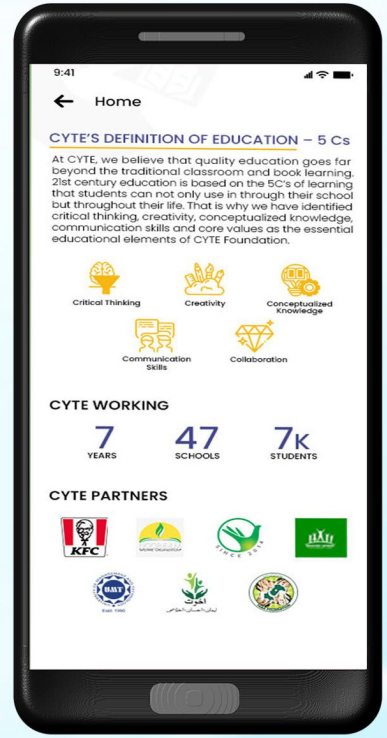
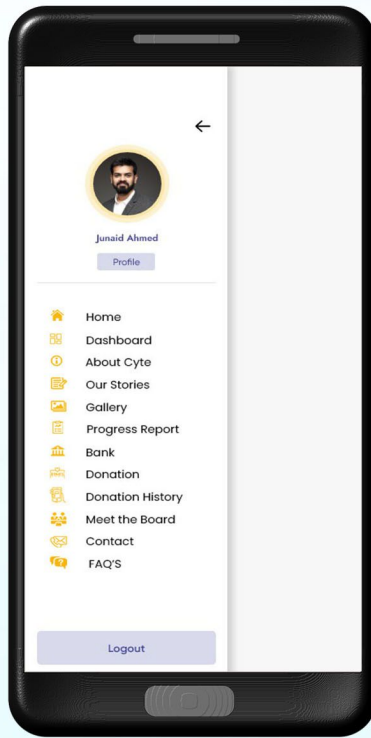
Donors can lodge any complaint through the app and the queries will be responded as soon as possible



ADD MORE STUDENTS

Support more students

1K 1LIFE APP



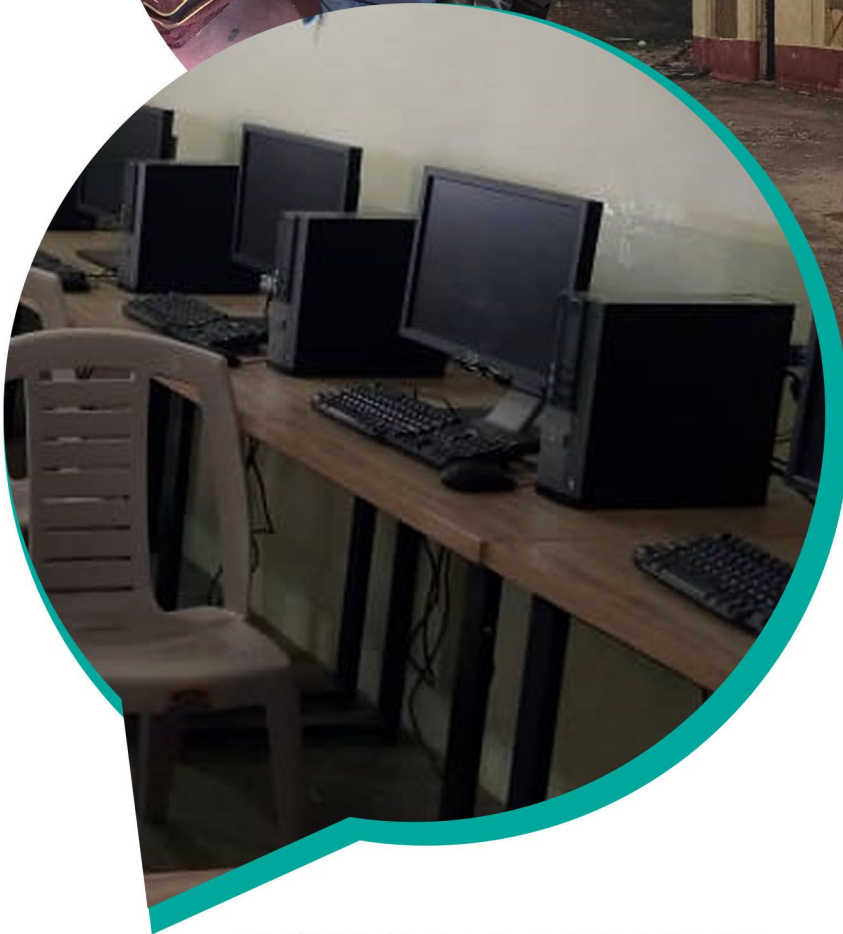
**DONATE TO #CYTEFOUNDATION
THROUGH 1K1LIFE APP**

DONATE

**ADOPT A
CHILD**



**ADOPT A
SCHOOL**



**DONATE A LIBRARY,
LAB, WATER SYSTEM OR UPS**

WE PROMOTE



Questioning

Thinking

Analysis

GET INVOLVED

We advocate every child's right to quality education and partner with schools in remote areas to ensure no child remains uneducated

We sponsor education of less-privileged children and bear all the educational expenses of the child including books, uniform and stationary



We develop school infrastructure, conduct trainings for teachers and principals, work with teachers, students and parents to ensure that no child remains uneducated

You can be a part of this cause by adopting a child for only 1k.

You can also choose to adopt a school or donate a library, lab, UPS or a solar system for ensuring quality education.

WE LOVE OUR PARTNERS



The background is a solid orange color with a repeating pattern of white line-art icons. These icons include dollar signs, money bags, briefcases, lightbulbs, calculators, hands holding coins, bar charts, and documents with dollar signs.

FINANCIAL HIGHLIGHTS



EY

**Building a better
working world**

CYTE FOUNDATION

**FINANCIAL STATEMENTS
FOR THE YEAR ENDED
30 JUNE 2021**

EY Ford Rhodes
Chartered Accountants
96-B-I, 4th Floor, Pace Mall Building
M, M. Alam Road, Gulberg-II
P.O. Box 104, Lahore-54660

Tel: +9242 3577 8402-11
Fax: +9242 3577 8412-13
ey.lhr@pk.ey.com
ey.com/pk



EY Ford Rhodes
Chartered Accountants
96-B-I, 4th Floor, Pace Mall Building
M, M. Alam Road, Gulberg-II
P.O. Box 104, Lahore-54660

Tel: +9242 3577 8402-11
Fax: +9242 3577 8412-13
ey.lhr@pk.ey.com
ey.com/pk

INDEPENDENT AUDITOR'S REPORT

To the trustees of CYTE Foundation

Report on the Audit of the Financial Statements for the year ended 30 June 2021

Opinion

We have audited the accompanying financial statements of CYTE foundation ('the Foundation'), which comprise the statement of financial position as at 30 June 2021 and the income and expenditure account, statement of changes in funds and statement of cash flows for the year then ended, and notes to the financial statements, including a summary of significant accounting policies.

In our opinion, the accompanying financial statements present fairly, in all material respects, the financial position of CYTE Foundation as at 30 June 2021, and its financial performance and its cash flows for the year then ended in accordance with approved accounting and reporting standards as applicable in Pakistan.

Basis for Opinion

We conducted our audit in accordance with International Standards on Auditing (ISAs) as applicable in Pakistan. Our responsibilities under those standards are further described in the Auditor's Responsibilities for the Audit of the financial statements section of our report. We are independent of the Foundation in accordance with the International Ethics Standards Board for Accountants' Code of Ethics for Professional Accountants as adopted by the Institute of Chartered Accountants of Pakistan (the Code) and we have fulfilled our other ethical responsibilities in accordance with the Code. We believe that the audit evidence we have obtained is sufficient and appropriate to provide a basis for our opinion.

Responsibilities of Management and Those Charged with Governance for the Financial Statements

The management is responsible for the preparation and fair presentation of the financial statements in accordance with the accounting and reporting standards as applicable in Pakistan and for such internal control as Board of Governors determines is necessary to enable the preparation of financial statements that are free from material misstatement, whether due to fraud or error.

In preparing the financial statements, management is responsible for assessing the Foundation's ability to continue as a going concern, disclosing, as applicable, matters related to going concern and using the going concern basis of accounting unless management either intends to liquidate the Foundation or to cease operations, or has no realistic alternative but to do so.

Board of governors are responsible for overseeing the Foundation's financial reporting process.

Auditor's Responsibilities for the Audit of the Financial Statements

Our objectives are to obtain reasonable assurance about whether the financial statements as a whole are free from material misstatement, whether due to fraud or error, and to issue an auditor's report that includes our opinion. Reasonable assurance is a high level of assurance, but is not a guarantee that an audit conducted in accordance with ISAs as applicable in Pakistan will always detect a material misstatement when it exists. Misstatements can arise from fraud or error and are considered material if, individually or in the aggregate, they could reasonably be expected to influence the economic decisions of users taken on the basis of these financial statements.



Building a better
working world

Page 2 of 2

As part of an audit in accordance with ISAs as applicable in Pakistan, we exercise professional judgment and maintain professional skepticism throughout the audit. We also:

- Identify and assess the risks of material misstatement of the financial statements, whether due to fraud or error, design and perform audit procedures responsive to those risks, and obtain audit evidence that is sufficient and appropriate to provide a basis for our opinion. The risk of not detecting a material misstatement resulting from fraud is higher than for one resulting from error, as fraud may involve collusion, forgery, intentional omissions, misrepresentations, or the override of internal control.
- Obtain an understanding of internal control relevant to the audit in order to design audit procedures that are appropriate in the circumstances, but not for the purpose of expressing an opinion on the effectiveness of the Foundation's internal control.
- Evaluate the appropriateness of accounting policies used and the reasonableness of accounting estimates and related disclosures made by management.
- Conclude on the appropriateness of management's use of the going concern basis of accounting and, based on the audit evidence obtained, whether a material uncertainty exists related to events or conditions that may cast significant doubt on the Foundation's ability to continue as a going concern. If we conclude that a material uncertainty exists, we are required to draw attention in our auditor's report to the related disclosures in the financial statements or, if such disclosures are inadequate, to modify our opinion. Our conclusions are based on the audit evidence obtained up to the date of our auditor's report. However, future events or conditions may cause the Foundation to cease to continue as a going concern.
- Evaluate the overall presentation, structure and content of the financial statements, including the disclosures, and whether the financial statements represent the underlying transactions and events in a manner that achieves fair presentation.

We communicate with those charged with governance regarding, among other matters, the planned scope and timing of the audit and significant audit findings, including any significant deficiencies in internal control that we identify during our audit.

Chartered Accountants
Audit Engagement Partner: Abdullah Fahad
Masood Lahore: 26 January 2022

CYTE FOUNDATION STATEMENT OF FINANCIAL POSITION AS AT 30 JUNE 2021

	2021				2020
	Note	Donation Fund	Zakat Fund	Total	
Non-current assets					
		----- (Rupees) -----			
Property and equipment	4	1,491,529		1,491,529	1,619,434
Intangible assets	5	50,000		50,000	
Long-term security deposit		240,000		240,000	240,000
Current assets					
Due from the Government	6	435,613		435,613	
Deposits and other receivables	7	4,500		4,500	
Cash and bank balances	8	<u>11,906,053</u>	<u>2,972,371</u>	<u>14,878,424</u>	<u>19,691,566</u>
Total assets		<u>14,127,695</u>	<u>2,972,371</u>	<u>17,100,066</u>	<u>21,551,000</u>
Less: Current liabilities					
Accrued expenses and other liabilities	9	1,397,565		1,397,565	2,780,576
Net assets		<u>12,730,130</u>	<u>2,972,371</u>	<u>15,702,501</u>	<u>18,770,424</u>
Represented By:					
Accumulated surplus		<u>12,730,130</u>	<u>2,972,371</u>	<u>15,702,501</u>	<u>18,770,424</u>

The annexed notes 1 to 14 form an integral part of these financial statements.



CHAIRMAN



GENERAL SECRETARY



TRUSTEE

CYTE FOUNDATION INCOME AND EXPENDITURE ACCOUNT FOR THE YEAR ENDED 30 JUNE 2021

	Note	2021		Total	2020
		Donation Fund	Zakat Fund (Rupees)		
INCOME					
Donation	10	27,194,125		27,194,125	36,852,330
Zakat			1,461,909	1,461,909	1,908,813
Total Income		27,194,125	1,461,909	28,656,034	38,761,143
EXPENDITURE					
Administrative and management expenses					
Office rent		838,500		838,500	715,000
Salaries expense		1,102,173		1,102,173	1,601,247
Audit fee		174,000		174,000	150,000
Depreciation of property and equipment	4	358,562		358,562	225,495
Amortization of intangible assets	5	10,000		10,000	
Utilities		337,749		337,749	150,135
Repair and maintenance		93,879		93,879	139,905
Office expense		257,091		257,091	369,935
Legal and professional charges		309,278		309,278	97,500
Internet and mobile charges		68,661		68,661	
		3,549,893		3,549,893	3,449,217
PROGRAM COSTS					
Tuition fee	11	14,521,731	2,016,025	16,537,756	14,923,659
Salaries expense		2,627,234		2,627,234	1,810,626
Travelling and lodging expense		490,199		490,199	177,979
Web designing and domain charges		7,464		7,464	
Repair and maintenance		1,773,170		1,773,170	36,545
Printing and stationery expense		919,468		919,468	198,020
Courier charges		150,327		150,327	172,368
Advertising expense		136,000		136,000	34,530
Bank charges		13,697		13,697	108,096
Other expenses		9,090		9,090	6,000
Project expenses	12	3,849,300		3,849,300	3,078,120
Event expense		175,904		175,904	316,080
Office rent		20,000		20,000	
Fuel Charges		30,412		30,412	
Loss on sale of disposal of property and equipment		222,043		222,043	
School construction expense		1,212,000		1,212,000	
		26,158,039	2,016,025	28,174,064	20,862,023
TOTAL EXPENDITURE		29,707,932	2,016,025	31,723,957	24,311,240
(DEFICIT) / SURPLUST	A	(2,513,807)	(554,116)	(3,067,923)	14,449,903
RESTRICTED FUNDS	B	1,761,000		1,761,000	13,380,127
(DEFICIT) / SURPLUS FOR THE YEAR	C=A-B	(4,274,807)	(554,116)	(4,828,923)	1,069,776

The annexed notes 1 to 14 form an integral part of these financial statements.



CHAIRMAN



GENERAL SECRETARY



TRUSTEE

CYTE FOUNDATION STATEMENT OF CHANGES IN FUNDS FOR THE YEAR ENDED 30 JUNE 2021

	<u>Donation</u>	<u>Zakat</u>	<u>Total</u>
	-----	(Rupees)	-----
Balance as at 01 July 2019	1,607,908	2,712,613	4,320,521
Surplus for the year	255,902	813,874	1,069,776
Restricted funds	13,380,127		13,380,127
Balance as at 30 June 2020	<u>15,243,937</u>	<u>3,526,487</u>	<u>18,770,424</u>
(Deficit) / Surplus for the year	(4,274,807)	(554,116)	(4,828,923)
Restricted funds	1,761,000		1,761,000
Balance as at 30 June 2021	<u>12,730,130</u>	<u>2,972,371</u>	<u>15,702,501</u>

The annexed notes 1 to 14 form an integral part of these financial statements.



CHAIRMAN



GENERAL SECRETARY



TRUSTEE

CYTE FOUNDATION STATEMENT OF CASH FLOWS FOR THE YEAR ENDED 30 JUNE 2021

	<u>Note</u>	<u>2021</u> (Rupees)	<u>2020</u> (Rupees)
CASH FLOWS FROM OPERATING ACTIVITIES			
(Deficit) for the year		(3,067,923)	14,449,903
Adjustments for:			
- Loss on disposal of Property and equipment		222,043	
- Depreciation on property and equipment	4	358,562	225,495
- Amortization on intangible assets	5	10,000	
Surplus before working capital changes		<u>(2,477,318)</u>	<u>14,675,398</u>
WORKING CAPITAL CHANGES			
Decrease I (Increase) in current assets			
Deposits and other receivables	7	(4,500)	
Increase I(decrease) in current liabilities			
Decrease in accrued and other liabilities	9	(1,383,011)	2,500,576
NET CASH USED IN / GENERATED FROM OPERATIONS		<u>(3,864,829)</u>	<u>17,175,974</u>
Income tax paid		(435,613)	
NET CASH USED IN / GENERATED FROM OPERATING ACTIVITIES		<u>(4,300,442)</u>	<u>17,175,974</u>
CASH FLOWS FROM INVESTING ACTIVITIES			
Property and equipment purchased	4	(1,902,700)	(944,000)
Intangible purchased	5	(60,000)	
Proceeds from sale of equipment	4	1,450,000	15,000
NET CASH USED IN INVESTING ACTIVITIES		<u>(512,700)</u>	<u>(929,000)</u>
NET CASH GENERATED FROM FINANCING ACTIVITIES			
NET (DECREASE) / INCREASE IN CASH AND CASH EQUIVALENTS		(4,813,142)	16,246,974
CASH AND CASH EQUIVALENTS AT THE BEGINNING OF THE YEAR		19,691,566	3,444,592
CASH AND CASH EQUIVALENTS AT THE END OF THE YEAR	8	<u>14,878,424</u>	<u>19,691,566</u>

The annexed notes 1 to 14 form an integral part of these financial statements.



CHAIRMAN



GENERAL SECRETARY



TRUSTEE

CYTE FOUNDATION

NOTES TO THE FINANCIAL STATEMENTS

FOR THE YEAR ENDED 30 JUNE 2021

1- STATUS AND NATURE OF ACTIVITIES

CYTE Foundation (hereinafter referred to as ('the Foundation') was incorporated in Pakistan and registered under Societies Registration Act, XXI of 1860 in 2013 as Non-Governmental Organization (NGO). Its core objective is to financially enable under-privileged children to have the right to quality education. CYTE Foundation is striving to contribute positively in the development of the country by "Changing Youth Through Education".

The registered office of the Foundation is situated at 255 MB, J Block Phase VI, DHA, Lahore. Pakistan,

2- BASIS FOR PREPERATION AND STATEMENT OF COMPLIANCE

2.1 Statement of compliance

These financial statements have been prepared in accordance with Accounting Standards for Not for Profit Organizations (NPOs) and Accounting and Financial Reporting Standards for Small Sized Entities (AFRS for SSEs) issued by the Institute of Chartered Accountants of Pakistan (ICAP) as applicable in Pakistan.

2.2 Basis of measurement

These financial statements have been prepared under historical cost convention.

2.3 Functional and presentation currency

These financial statements are presented in Pak Rupee, which is the Foundation's functional currency. Figures have been rounded off to the nearest Pak Rupee, Unless otherwise stated.

3- Summary of significant accounting policies

3.1 Operating fixed assets

These are stated at historical cost less accumulated depreciation and impairment, if any. Depreciation on assets is charged to income using straight line method whereby the cost of the asset is written off over its estimated useful life. Depreciation on additions to property and equipment is charged from the month in which the asset is acquired or capitalized, while no depreciation is charged for the month in which the asset is disposed off.

Asset's residual value and useful life are reviewed and adjusted if appropriate, at each balance sheet date. An asset's carrying amount is written down immediately to its recoverable amount if its carrying amount is greater than its estimated recoverable amount. Subsequent costs are included in the asset carrying amount or recognized as a separate asset, as appropriate, only when it is probable that future economic benefits associated with the asset will flow to the entity and the cost of the asset can be measured reliably. All other repair and maintenance cost are charge to income and expenditure account during the year in which these are incurred.

The gain or loss on disposal or retirement of an asset, represented by the difference between the sale proceeds and the carrying amount of an asset, is recognized as an income or an expense.

3.2 Cash and cash equivalents

For the purpose of cash flow statement, cash and cash equivalent comprises of cheques in hand, cash and bank balances. The cash and cash equivalents are subject to insignificant risk of changes in value.

3.3 Revenue recognition

Donation, Zakat and life time membership fee income are recognized on receipt basis.

3.4 Accrued liabilities

These are stated initially at cost which is the fair value of the consideration to be paid in the future for goods and services received, whether or not billed to the Foundation.

3.5 Taxation - current

The Foundation is approved as a non profit organization under section 2(36) of Income tax Ordinance 2001 (the Ordinance) by the Commissioner of Inland Revenue, therefore its income is exempt from tax under section 100C of the Ordinance, The foundation is also exempt from levy of minimum tax under section 113 vide clause 11A of Part IV, Second Schedule of Income Tax Ordinance. 2001, therefore, no provision has been made in these purpose financial statements.

CYTE FOUNDATION

5- INTANGIBLE ASSETS	Note	2021 (Rupees)	2020 (Rupees)
Cost			
As at 1 July		-	-
Additions during the year	5.1	<u>60,000</u>	<u>-</u>
As at 30 June		60,000	-
Amortization			
As at 1 July		-	-
Amortization charged during the year		<u>10,000</u>	<u>-</u>
As at 30 June		10,000	-
Net book value		<u>50,000</u>	<u>-</u>
Amortization rate		<u>20%</u>	<u>-</u>

5.1 The addition in intangible assets represents quickbooks liscence purchased during the year.

6- DUE FROM THE GOVERNMENT

This includes withholding tax dedcuted at source and advance income tax deducted on electricity bills.

7- DEPOSITS AND OTHER RECEIVABLES

This pertains to advance deposited against mobilink post paid sim card for office use.

	2021			2020
	Donation Fund	Zakat Fund	Aggregate	
	(Rupees)			
8- CASH AND BANK BALANCE				
Cash in hand	12	-	12	21,084
Cash at bank - current account	11,906,041	2,972,371	14,878,412	19,670,482
	<u>11,906,053</u>	<u>2,972,371</u>	<u>14,878,424</u>	<u>19,691,566</u>
9- ACCRUED EXPENSES AND OTHER LIABILITIES				
Salaries and others payable	129,465	-	129,465	415,876
Tuition fee payable	965,700	-	965,700	2,062,300
Audit fee	<u>302,400</u>	<u>-</u>	<u>302,400</u>	<u>302,400</u>
	<u>1,397,565</u>	<u>-</u>	<u>1,397,565</u>	<u>2,780,576</u>

10- DONATION

This includes amounts received from KFC and Shahid Afridi Foundation (SAF) under agreement.

11- TUITION FEE

There are total 20 schools (2020: 20 Schools) registered with the CYTE Foundation, Where monthly fee or selected students is paid directly to these schools. Further, the foundation also pays monthly fee for selected students studying in unregistered schools, academies and universities.

	Note	2021					2020
		No. of Active Students		Donation Fund	Zakat Fund	Aggregate	
		2021	2020	(Rupees)			
The Smart School		5	8	90,120	-	90,120	201,100
Bright Way Public Middle School		75	75	54,800	365,200	420,000	381,000
Tahira Educational Grammar School		30	22	-	154,400	154,400	216,730
Lahore Public Girls High School		100	100	828,000	-	828,000	852,000
The High Achievers School		-	25	-	-	-	185,000
Iqra Community Model School (AJK)		50	50	9,120	104,880	114,000	150,000
Mohai Ud Din Model Public School (AJK)		150	150	900,000	-	900,000	800,000
Mustafai Model School		300	300	1,800,000	-	1,800,000	1,550,000
Nauman Public School (AJK)		50	50	18,400	95,600	114,000	94,009
Al-Noor Model Science College (AJK)		350	350	2,100,000	-	2,100,000	1,800,000
Rising Public School (AJK)		25	40	51,040	6,960	58,000	99,000

Shaheen Public School Jandar sari (AJK)	70	70	159,600	-	159,600	210,000	
University Model Public School (AJK)	50	50	18,240	95,760	114,000	150,000	
SAF Malik Pur Campus	380	380	4,332,000	-	4,332,000	4,101,000	
Al-Suffah School (KPK)	300	300	1,800,000	-	1,800,000	1,541,000	
Fatheen Learning Institue (KPK)	50	50	13,560	100,440	114,000	100,000	
Sana Model Public School (KPK)	300	300	1,800,000	-	1,800,000	1,500,000	
Broshal Model Girls School	-	35	12,600	-	12,600	70,000	
Rising Star Public School (AJK)	60	25	36,600	85,800	122,400	96,000	
Aims School and College (AJK)	50	-	78,000	-	78,000	-	
Fatima Kids Campus	23	-	41,200	226,200	267,400	-	
Al-Firdous Welfare Association	50	-	195,000	-	195,000	-	
School fee, tuition fee and others	11.1	<u>27</u>	<u>40</u>	<u>183,451</u>	<u>780,785</u>	<u>964,236</u>	<u>826,670</u>
		<u>2,495</u>	<u>2,380</u>	<u>14,521,731</u>	<u>2,016,025</u>	<u>16,537,756</u>	<u>14,923,659</u>

11.1 This relates to the school fee paid for Individual students studying in unregistered schools, academies and universities.

12- PROJECT EXPENSES

This includes Rs. 2,242,300 (2020: Rs. 2,736,870) expenditure on the food distribution project and Rs. 794,000 (2020: Rs. Nill) on goat project in Azad Jammu and Kashmir.

13- NUMBER OF EMPLOYEES

	<u>2021</u>	<u>2020</u>
The total number of employees at the Foundation	<u>12</u>	<u>7</u>

14- DATE OF AUTHORIZATION FOR ISSUE

These financial statements were approved and authorized for issue by the Governing Body on 27-12-2021.



CHAIRMAN



GENERAL SECRETARY



TRUSTEE

MY PLEDGE

Name: _____

Contact Number: _____

CNIC: _____

Organization: _____

Pledge Amount: _____

PAYMENT METHOD

Cash

Cheque

PAYMENT TIME PERIOD

From: _____ To: _____

FOR ONLINE DONATION

www.cytefoundation.com

BANK DETAILS

CYTE FOUNDATION

FOR ZAKAT

Bank Name : MEEZAN BANK LIMITED
Account Title : CYTE FOUNDATION
Account No : 0105279889
Address : Plot# C3 Commercial Broadway
Phase VIII DHA Lahore.
Branch Code : 0263
IBAN : PK04MEZN0002630105279889

FOR DONATION

Bank Name : BANK ALFALAH LIMITED
Account Title : CYTE FOUNDATION
Account No : 0028-1003-875164
Address : Main Boulevard Branch
Gulberg, Lahore, Pakistan
Branch Code : 0028
IBAN : PK72ALFH00281003875164



CYTE FOUNDATION

CHANGING YOUTH THROUGH EDUCATION

CYTE FOUNDATION

-  Office 405, 4th Floor, Haly Tower, Phase II, DHA Lahore
-  +92 42 32173114
-  www.cytefoundation.com
-  Email: info@cytefoundation.com
-  [/cytefoundation](https://www.facebook.com/cytefoundation)
-  [/cytefoundation](https://www.instagram.com/cytefoundation)